



1976 AMC passenger cars... Built with you in mind



The Economy Experts

SHELDON RODY

Gremlin
Hornet
Pacer
Matador
Jeep 4-Wheel Drive
Used Cars
(219) 484-9671

Fort Wayne AMC / Jeep
4320 Coldwater Rd.
Ft. Wayne, Ind.
46805

Special AUTO SHOW Edition



Pacer

Pacer, the first wide small car, has more of everything for everybody. That's a big order. But Pacer fills it beautifully.

Being the first wide small car gives Pacer a years-ahead look. Styling to stay in style . . . beautifully functional. A low, easy-to-see-over hood. Broad expanses of glass for virtually 360-degree visibility. A passenger side door nearly four inches wider to make getting in and out easier, front and rear.

Inside, Pacer's greater width pays off in more room than you thought possible in a small car. Try it for size. Even with a full complement of four passengers, there's more room all around.

And out on the road, Pacer's wide firm stance gives it a solid feel that's like nothing in its class. Rack and pinion steering provides handling that's a pure delight.

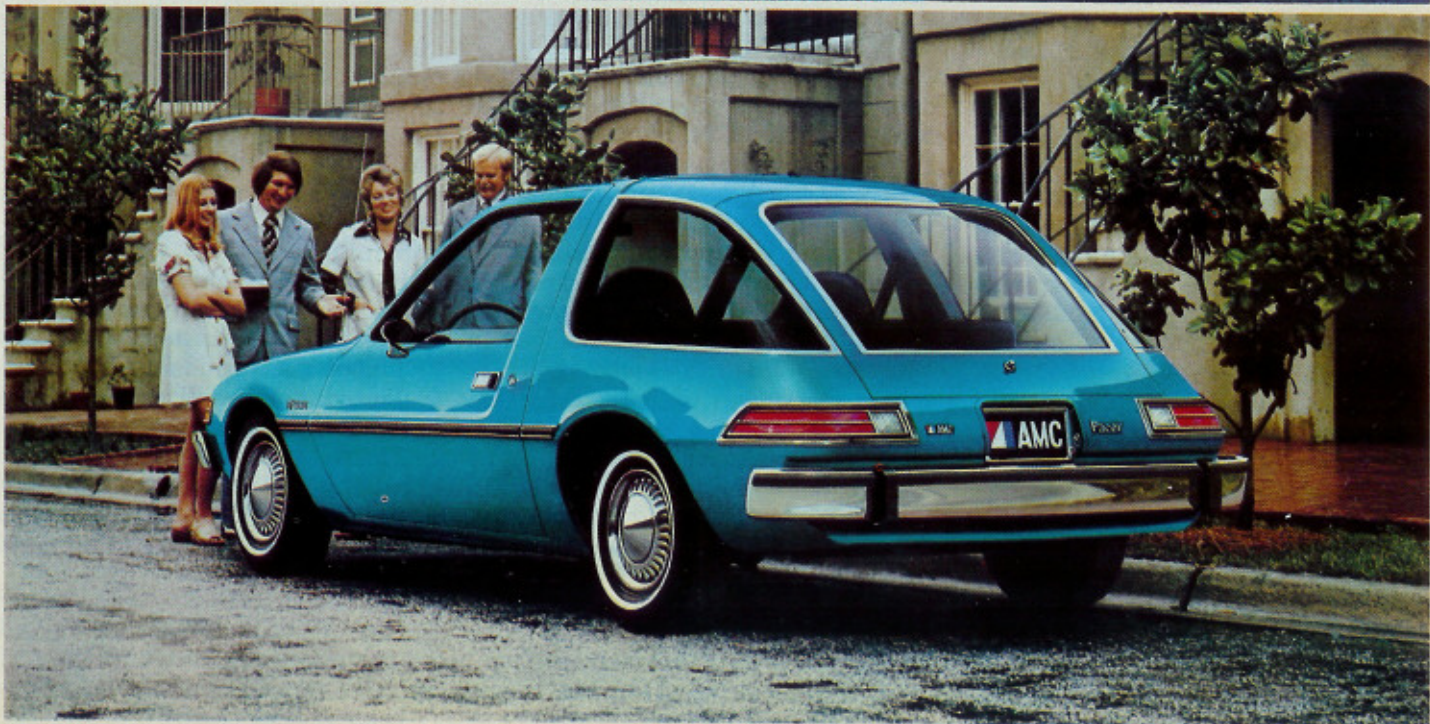
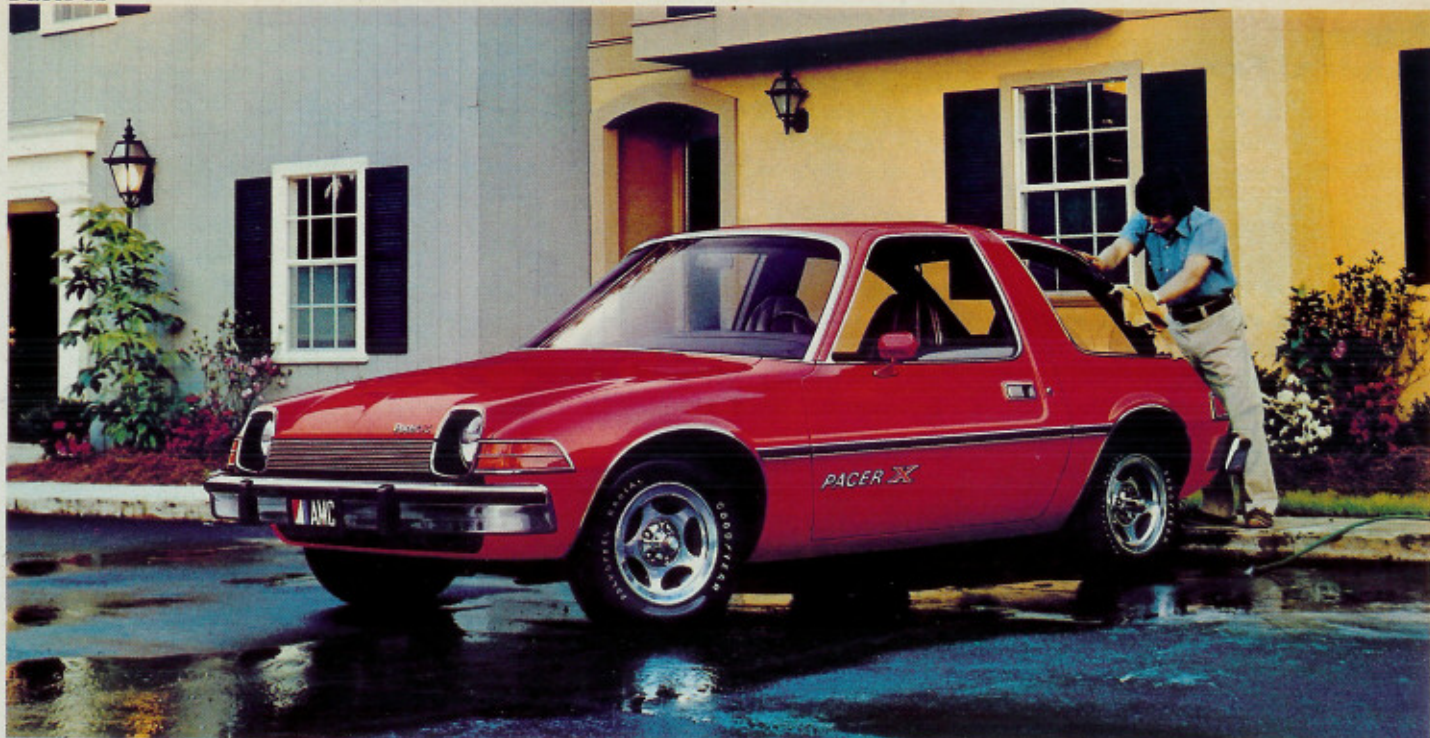
Economy, of course, is another Pacer strong point. Its 6-cylinder engine means more miles per gallon; its 22-gallon gas tank means more miles between fill-ups.

And there's another benefit to being the first wide small car—the wider coverage provided by AMC's exclusive BUYER PROTECTION PLAN.®

AMC  **Pacer**

Pacer D/L

Pacer X



Pacer

Pacer Standard Features

- Power team: economical 232 CID 6-cylinder engine, 3-speed manual synchronesh transmission
- Electronic ignition, virtually maintenance-free
- Foam-cushioned bench seats
- Color-keyed carpeting; color-keyed rubber mat in cargo area
- Folding second seat for up to 28 cu. ft. of cargo space
- Ventless side glass
- Protective body side scuff molding
- Parking brake warning light
- For smoother, quieter riding: isolated front cross member and coil-spring suspension; isolated rear leaf-spring suspension
- Weather Eye Heating and Defrosting System
- Concealed 2-speed electric wipers and washers
- Dome light actuated by doors
- Rear lift window with built-in assist for easy opening and closing
- Free-standing bumpers
- 50-amp battery
- Drum brakes (10" front, 9" rear)
- Aluminum hub caps
- Ash tray and cigarette lighter
- Durable "Luster-Guard" acrylic baked enamel finish

Pacer Options

ECONOMY OPTIONS

- Cruise Command automatic speed control (auto trans. req'd.)
- Fuel economy light. Comes on as a reminder whenever you're driving beyond the best fuel economy range. (Not avail. with Overdrive.)
- Higher-mileage steel-belted radial tires
- Overdrive (with all engines)
- Economy rear axle (2.53 to 1 ratio) available with auto trans.

AIR CONDITIONING OPTION

- All-Season Air Conditioning System for added comfort. Includes: heavy-duty engine cooling, power flex fan, 55-amp alternator. Requires tinted glass in all windows.

APPEARANCE OPTIONS

- Sporty high-back bucket seats.
- Individual reclining seats (D/L only)
- Two-tone paint includes front and rear body side scuff molding extensions. (Not avail. with vinyl roof.)
- Vinyl roof in five color choices
- Sports steering wheel
- Soft-wrapped sports steering wheel
- Full wheel covers.
- Styled road wheels
- Styled aluminum wheels
- "X" Package. (Not avail. with "D/L" Pkg.) *Interior:* vinyl bucket seats with manual floor shift, instrument panel woodgrain overlay, sports steering wheel, custom door trim (vinyl inserts, door pull straps, carpet in lower recessed area), Extra Quiet Insulation Package. *Exterior:* D78 x 14 black tires, slot-styled wheels, color-keyed side scuff moldings, door window moldings, bumper nerfing strips, front sway bar, Pacer "X" ornamentation.
- "D/L" Package. (Not avail. with "X" Pkg.) *Interior:* Basketry fabric, instrument panel woodgrain overlay, custom padded steering wheel, custom door trim (fabric inserts, door pull straps, carpet in lower recessed area), carpeted cargo area, Extra Quiet Insulation Package. *Exterior:* wheel covers, color-keyed side scuff moldings, door window moldings, license surround molding, bumper nerfing strips, front sway bar, Pacer "D/L" ornamentation.

- Luxury Trim Option. Custom Hyde Park fabric seat trim on individual reclining seats and door trim inserts. (With D/L Pkg. only).
- Decor Package. Includes: wheel opening moldings, rear hood edge moldings, door window moldings, license surround moldings, wheel covers, lower back panel overlay, rear wheelhouse pads.

AUDIO OPTIONS

- AM radio: instant performance, long-range reception, push-button convenience.
- Rear speaker (with AM radio)
- AM/FM stereo radio. Four speakers enhance programming of both AM and FM station selections.
- Entertainment Center: AM/FM stereo radio, 8-track stereo tape with four speakers—surrounds you with sound!

CONVENIENCE OPTIONS

- Torque-Command automatic transmission
- Visibility Group. Includes: color-keyed remote-control outside left mirror, illuminated visor vanity mirror, 12-inch day/night mirror, intermittent-action windshield wipers.
- Between-the-seats console with lockable storage compartment (with bucket seats or reclining seats only).
- Tinted glass windshield
- Tinted glass in all windows
- Door vent windows
- Electric rear window defogger (heated glass). Includes 55-amp alternator and tinted rear glass.
- Rear window wiper/washer. Cleans big rear window just like windshield wipers up front.
- Rear Visibility Package. Includes rear window defogger and wiper/washer.
- Intermittent-action windshield





Pacer high-back bucket seats in tan Sof-Touch vinyl optional on all Pacer models (standard with "X" Package). Also comes in black, white, blue and berry.



Pacer D/L optional individual reclining seats in berry "Basketry Print" fabric. Black, blue, tan also available in this option.

wipers

- Lockable cargo cover to conceal valuables from view
- Light Group. Includes: dual courtesy lights, glove box light, ashtray light, engine compartment light, dome lamp switch on liftgate.
- Roof luggage rack
- Adjust-O-Tilt steering column (with auto. column shift only)
- Convenience Group. Includes: dome/reading lamp, electric clock, stowage/litter containers, second

(Optional features, top to bottom)

- Vinyl roof and luggage rack.
- Rear window wiper/washer.
- Entertainment center.
- Styled aluminum wheels.

horn, headlights-on warning buzzer.

HEAVY-DUTY OPTIONS

- Heavy-Duty Cooling System. Includes: heavy-duty radiator, power flex fan and fan shroud (std. with air conditioning).
- Heavy-Duty Suspension. Includes: heavy duty springs and shock absorbers, front sway bar.
- Engine block heater for easier winter starting and quick heat.
- Heavy duty battery (70-amp)

PERFORMANCE OPTIONS

- Rally Package (with bucket or ind. reclining seats) Includes: console, black, leather-wrapped sports steering wheel, tach.,

electric clock and amp., oil pressure, coolant/temp. gauges.

- 258 CID 6-cylinder engine, 1 bbl.
- 258 CID 6-cylinder engine, 2 bbl. for snappier performance
- Manual front disc brakes (greater fade resistance)
- Twin-Grip differential
- Front sway bar (added stability in cornering)
- Floor shift for manual or automatic trans.

POWER ASSIST OPTIONS

- Power steering
- Power front disc brakes

PROTECTION OPTIONS

- Protection Group. Includes: front

and rear floor mats (front mats have carpet inserts), rocker panel molding, scuff molding extensions.

- Locking gas cap
- Bumper nerfing strips and bumper guards
- Extra Quiet Insulation Package. Includes: cargo floor carpeting and sound deadener, rear floor insulation, cowl panel side insulation, lock pillar insulation, full undercoating.

All interiors shown are optional. For standard Pacer interior information, see your AMC Dealer.

AND NOW A WORD FROM THE PEOPLE WHO BUILD AND STAND BEHIND THE CARS YOU'VE JUST SEEN.

At American Motors and at your local AMC dealership, your needs as a consumer and your satisfaction as a customer always come first. In the big, busy, impersonal world of today that may seem rather different. It is. But we don't ask you simply to take our word for it.

Take our cars, for example. Each one from Pacer right up to Matador is designed to give you full value and longer-lasting satisfaction. Each is a quality-built product that provides outstanding, all-around economy—a car that is economical to buy, own and operate.

Whether it's your first car or your 15th... whether you're single, newly wed, have a family or your family is grown... our Pacers, Gremlins, Hornets and Matadors offer alternatives you'll appreciate. Our differences in design, features and equipment add up to a big difference in car choice. Within the full AMC line you'll find the model that more exactly suits your needs as it fills all the needs of today's driving.

Take our exclusive BUYER PROTECTION PLAN®. It's always been the plan with a difference—protection for both your AMC car and you. And for a nominal sum, you get our DOUBLE BUYER PROTECTION PLAN which extends the protection up to two years or 24,000 miles.

Take our invitation. Now that you've read about our new cars, look them over closely. Try them out on the road. And be sure to ask a salesman to explain in full each of the benefits of the BUYER PROTECTION PLAN®, which we've highlighted for you here. You'll find in all of our differences a new kind of dedication to your satisfaction as a customer. You'll also find every reason why this Bicentennial Year is the best one yet to go with the Economy Experts!

AMC BUYER PROTECTION PLAN.®

1. A simple, strong, full 12,000-mile/12-month warranty:

When you buy a new 1976 AMC car from an American Motors dealer, American Motors Corporation guarantees to you that, except for tires, it will pay for the repair or replacement of any part it supplies that is defective in material or workmanship. This guarantee is good for 12 months from the date the car is first used or 12,000 miles, whichever comes first. All we require is that the car be properly maintained and cared for under normal use and service in the fifty United States or Canada and that guaranteed repairs or replacements be made by an American Motors dealer.

2. A free loaner car from almost every one of our dealers if guaranteed repairs take overnight.

3. Special Trip Interruption Protection.

4. And a toll-free hot line to AMC Headquarters.

® BUYER PROTECTION PLAN is a registered trademark of American Motors Corporation.

“Safe-Command” Features

Along with economy, safety is important in every car we build. In addition to the standard equipment listed with each series, the following “SAFE-COMMAND” features are standard on all AMC cars:

- Energy-absorbing bumper systems
- Certified flame-resistant fabrics
- Two front head restraints
- 4-way hazard warning signals
- Lane changer turn signals
- Automatic backup lights
- Side of car safety marker lights
- Guard-rail doors
- Energy-absorbing steering column
- High-strength windshield glass
- Tempered side and rear glass
- Padded sun visors
- Padded instrument panel
- Single-buckle front-seat lap and shoulder belts for driver and right side passenger (with seat belt buzzer and warning light); seat belts for all other passengers
- Safety-shaped armrests
- Double-safety brake system
- Brake system warning light
- Self-adjusting brakes
- Corrosion-resistant brake lines
- Safety rim wheels
- Captive engine mounts
- High-strength door locks/hinges
- Safety-shaped door handles
- 2-key locking system
- Front seat-back lock (2-door models)
- Dual action hood latch

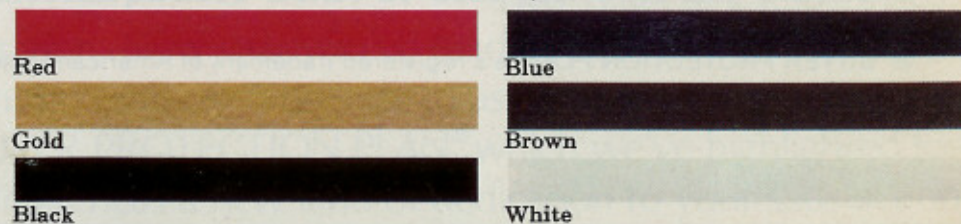
FOR YOUR '76 AMC CAR . . . Your choice of 20 beautiful colors* in "Luster-Guard" acrylic enamel



Your choice of 8 "Bravado" grain vinyl-covered roof options* (Copper Vinyl Roof also available, not shown)



Your choice of these decorative paint stripes*



*For model applications, refer to your AMC dealer's Color and Trim book.

Certain equipment items and features, illustrated or described in this catalog, are optional at extra cost unless otherwise specified. Certain equipment items and features may not be available for all models. American Motors, whose policy is one of continuous improvement, reserves the right to discontinue or change specifications, models, equipment or price at any time without incurring obligation.

AMC, PACER, GREMLIN, HORNET, MATADOR, SPORTABOUT, and BUYER PROTECTION PLAN® are trademarks of American Motors Corporation.

