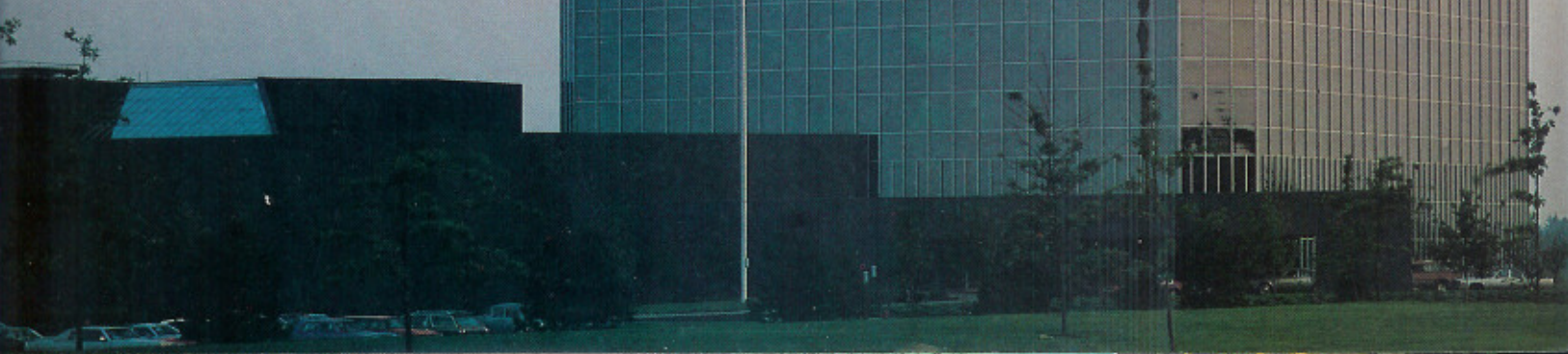


 AMC

**79** SPIRIT  
CONCORD  
PACER



American Center



American Motors Corporation today is a diversified, worldwide company and is among the 100 largest manufacturing corporations in America. The world headquarters is a symbol of the growth that has taken the company far beyond its pioneering role as a manufacturer of passenger cars. Today, future plans encompass a widening range of consumer and transportation needs around the globe.

American Motors and subsidiary companies have a total of 22 plants in the U.S. and Canada while international operations includes 25 manufacturing and assembly plants and licensees worldwide. American Motors employs more than 29,000 people.

Passenger cars still remain the keystone for the company that brought to America the compact car revolution, the company whose 1979 products reflect more than 75 years of small car development and innovation. But opportunity now comes from many directions: The explosive four-wheel-drive market, where the company's Jeep vehicles are world-renowned. The diverse market for such special vehicles as tactical trucks, Postal Service delivery vehicles, and equipment movers, in which American Motors AM General subsidiary is one of the world's major producers. Additionally, American Motors and its subsidiaries manufacture lawn and garden tractors under the Wheel Horse name and are important suppliers of engines and plastic parts to a host of other industries.

All of these operations combine to give American Motors a wide, strong base for continued growth in the transportation industry.



# PACER WAGON



Trim good looks are only a fraction of Pacer Wagon's merits. Here's a compact wagon that simply doesn't feel or act like one. AMC Pacer Wagon has a big car personality.

AMC Pacer DL Wagon likes to pamper its owners with soft, comfortable surroundings. Pacer's unique wide stance and isolated suspension deliver a smooth, stable ride. A ride quite unlike that of any other compact you've driven. Response is quick.

Parking is a pleasure. So is the airy feeling of Pacer Wagon's surprisingly spacious interior.

Standard features include individual reclining seats, newly designed door trim panels, folding rear seat back, and much more.

The new Pacer Limited Wagon offers even higher levels of appointments and conveniences. Standard

are genuine leather seats with corduroy accents, luxury woodgrain steering wheel and a host of power extras.

Pacer Wagon offers an unmatched combination of big car room, ride and comfort with excellent maneuverability.

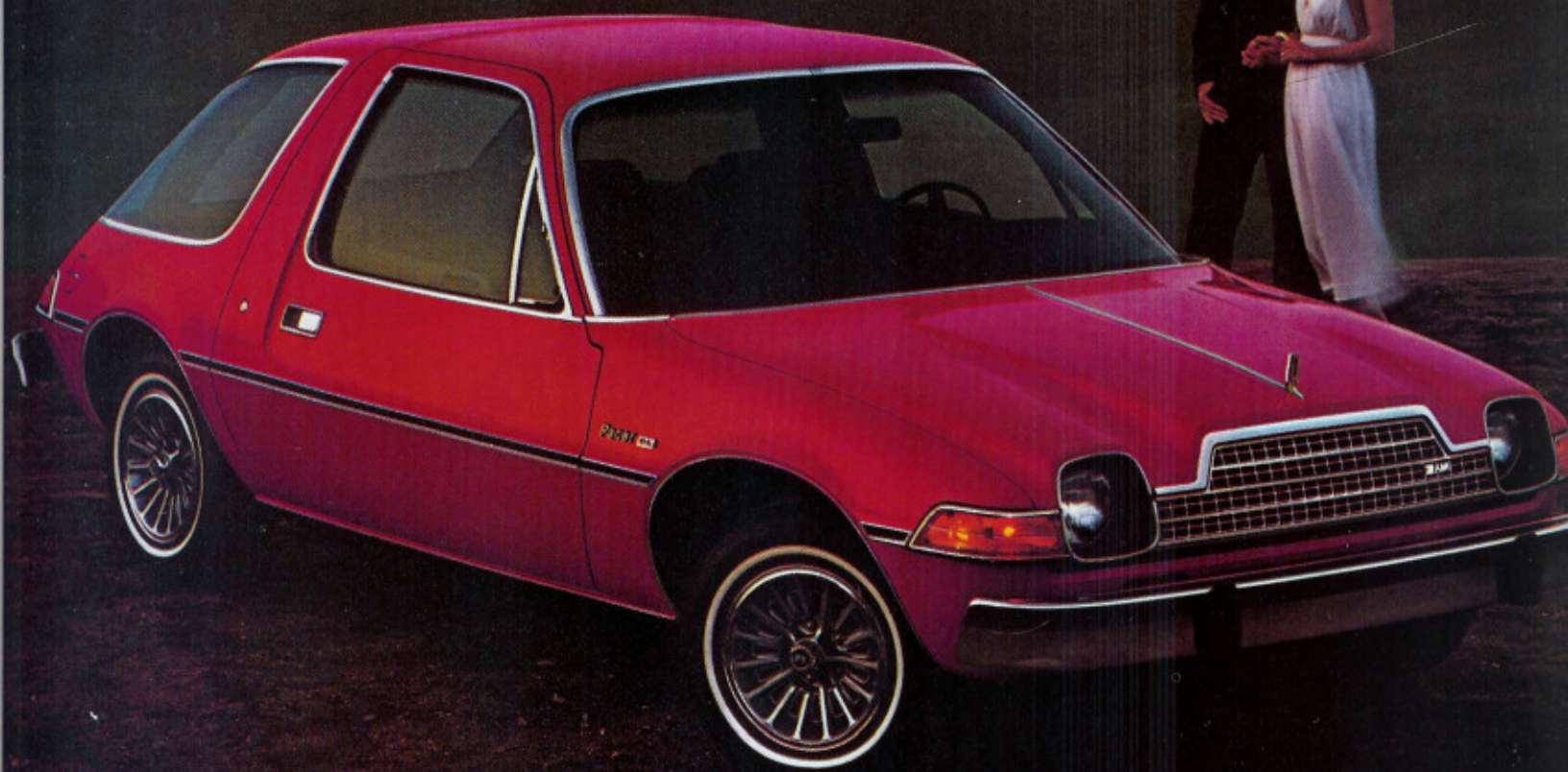
Pacer Limited Interior — Leather/Corduroy



Pacer Limited Wagon

# PACER HATCHBACK

---



The AMC Pacer Hatchback is a unique, distinctive car for the discriminating buyer.

AMC Pacer Hatchback's performance is smooth and stable. It's fun to drive. Handling and maneuverability are responsive — a credit to Pacer's isolated suspension and rack & pinion steering. Pacer's unique wide body design provides

spacious passenger room and stability on the highway.

Pacer DL Hatchback has features that include individual reclining seats, woodgrain instrument panel overlays, folding rear seat back and a wide rear hatch that opens onto a flat load floor.

The new Pacer Limited Hatchback offers genuine leather and corduroy interior, folding center

armrest, luxury woodgrain steering wheel, power steering, front disc brakes, power windows and door locks, dual remote mirrors and much more.

AMC Pacer Hatchback — an exceptional blend of big car room, ride and comfort.

Pacer DL interior — Caberfae Corduroy



Pacer Limited Hatchback

# OPTIONS

## OPTIONAL PACKAGE AND GROUP CONTENT

### G.T. Package

#### (Optional on Spirit DL or Limited Liftback)

steel belted radial BSW tires • spoke styled wheels (4) • Performance Tuned exhaust sound (V-8 with manual transmission only) • black full length console with integral center armrest • black leather-wrapped sport steering wheel • black steering column • black instrument panel with Walnut Burl woodgrain overlays • tachometer • woodgrain accents on door trim panels • black bumpers with nerfing strips and guards • dual black remote mirrors • black exterior trim moldings • black grille insert, headlight bezels and wiper arms • black rear Venturi area • G.T. medallions

### G.T. Rally-Tune Suspension Package

#### (Standard on AMX; optional on Spirit DL or Limited Liftback with G.T. Package)

heavy duty front and rear sway bars • adjustable "Strider" shock absorbers • heavy duty strut rod bushings • heavy duty rear spring iso-clamp pads • heavy duty Hi-Control rear leaf springs • unique steering gears • heavy duty front disc and rear drum brakes

### Gauge Package

#### (Standard on AMX; not available with 4-cylinder engine; not available Concord)

electric tachometer • ammeter • oil pressure gauge • water temperature gauge (Pacer only; standard on all Spirit and Concord models) • manifold vacuum gauge (Spirit only) • clock

### Air Conditioning Package

air conditioning • heavy duty cooling system • heavy duty alternator • flex fan • tinted glass (all windows) • power steering • instrument panel parcel shelf (Spirit and Concord Base model only)

### Convenience Group

#### (All models)

lights-on warning buzzer • lighted visor mirrors (both sides) • intermittent wipers

### Visibility Group

#### (Not available on AMX; standard on Limited models)

remote control mirrors (both sides) • day/night mirror (Spirit and Concord base models only)

### Handling Package

#### (All Spirit and Concord models except Spirit Liftback with G.T. Package; not available with 4-cylinder engine)

• unique front sway bar • rear sway bar

### Light Group

#### (Standard on Limited models)

dome map lights • rear door switches (Concord 4-Dr. Sedan and Wagon only) • glove box light • engine compartment light • dome light rear door switches (Concord 4-Dr. Sedan and Wagon only) • trunk light (Concord 2-Dr. and 4-Dr. Sedan only) courtesy lights (Spirit and Concord Base models) • dome light liftgate switch (Spirit Liftback, AMX, Concord Hatchback and Wagon, and Pacer only) • cargo area light (Pacer Wagon)

### Protection Group

#### (Spirit, Concord Base and DL models; standard on Spirit and Concord Limited models)

bumper nerfing strips • front bumper guards (Base models only — standard on DL models) • color-keyed floor mats (front only on Spirit models) • door edge guards (Spirit and Concord Base and DL models only). Pacer DL Protection Group includes front and rear nerf strips and color-keyed floor mats only (standard on Pacer Limited)

### Heavy-Duty Cooling System

#### (All Spirit and Concord models; standard on Pacer; included with air conditioning)

heavy duty radiator • viscous drive fan • fan shroud • coolant recovery system (standard on Pacer models)

### Maximum Cooling System

#### (All models with V-8 engine)

heavy duty cooling system • extra heavy duty radiator

### Altitude Driveability Option

#### (All models destined for principal usage at high altitudes)

special axle • special engine calibration

### Cold Climate Group

#### (All models)

heavy duty battery • heavy duty alternator • engine block heater

### OPTIONAL EQUIPMENT

Many of the options listed below are included as standard features on specific models and are also available on models not so equipped

### POWER ASSISTED COMPONENTS

- power steering
- power front disc brakes
- power windows (Pacer only)
- power door locks
- power liftback release (Spirit Liftback only)

### AUDIO

- AM radio
- AM/FM stereo radio with 4 speakers
- AM/FM/8-track tape stereo radio with 4 speakers (Pacer only)
- AM/FM stereo/CB radio with 4 speakers

### CONVENIENCE

- air conditioning system
- tachometer (Spirit and Concord only)
- electronic digital clock, (Spirit and Concord only, not available with tachometer)
- tinted glass
- electric rear window defroster
- rear window wiper/washer (Pacer only)
- dual horns
- hidden cargo storage compartment (Concord Hatchback models only)

- Cruise Control (not available with 4-cylinder engine or manual transmissions)
- adjustable tilt steering wheel
- remote LH mirror (included with Visibility Group)
- roof rack (Concord Wagon, Spirit Sedan and Pacer models, not available with pop-up moon roof)
- tailgate air deflector (Spirit Sedan only)
- pop-up moon roof (not available with roof rack Wagon models)
- console with integral center armrest (Spirit)
- console (Pacer)
- folding center armrest (Pacer)
- door vent windows (Pacer)

### APPEARANCE

- Clearcoat paint, 1 color (Pacer)
- two-tone paint (all models except Spirit Sedan and AMX, or with Rally stripe or GT package)
- vinyl roof (Pacer Hatchback)
- woodgrain side overlays (Pacer Wagon)
- Rally stripe (Spirit)
- leather wrapped sport steering wheel
- luxury woodgrain steering wheel (Concord and Pacer)

### WHEEL TRIM

- styled wheel covers (argent)
- color-keyed styled wheel covers
- spoke styled wheels (4)
- turbine forged aluminum wheels (4)
- turbocast II aluminum wheels (4) (Spirit)

### PROTECTION

- bodyside scuff moldings
- locking gas cap
- protective inner coating
- Extra Quiet insulation
- bumper guards

### HEAVY DUTY

- heavy duty battery
- air shocks, with compressor (Concord)
- air shocks, manual (Spirit and Pacer)
- transmission oil cooler (Concord and Pacer with V-8 engine & automatic transmission)
- twin grip differential

- a) automatic floor shift
- b) lighted vanity mirror
- c) turbine forged aluminum wheels
- d) dome light
- e) pop-up moon roof
- f) tilt steering wheel
- g) turbocast II aluminum wheels
- h) electronic digital clock
- i) power door lock
- j) power windows/power door lock (Pacer only)
- k) AM/FM stereo radio
- l) rear window wiper/washer (Pacer only)
- m) sport steering wheel
- n) Cruise Control
- o) gauge package





# STANDARD FEATURES

## MODEL AVAILABILITY

<b>Spirit</b>	
Liftback (2-door):	Base, DL, Limited
Sedan (2-door):	Base, DL, Limited
<b>AMX</b>	
Liftback (2-door)	
<b>Concord</b>	
Sedan (2- and 4-door):	Base, DL, Limited
Wagon (4-door):	Base, DL, Limited
Hatchback (2-door):	Base, DL
<b>Pacer</b>	
Wagon (2-door):	DL, Limited
Hatchback (2-door):	DL, Limited

## Spirit, Concord and Pacer models include these standard features:

- ▶ 121 CID 4-cylinder engine (Spirit)
- ▶ 232 CID 6-cylinder engine (Concord)\*
- ▶ 258 CID 6-cylinder engine (Pacer)
- ▶ 4-speed manual floor shift
- ▶ front disc brakes
- ▶ high pressure compact spare tire
- ▶ inside hood release
- ▶ 13 gallon fuel tank (Spirit Sedan, 4-cylinder engine)
- ▶ 21 gallon fuel tank (Spirit, Pacer)
- ▶ 22 gallon fuel tank (Concord)
- ▶ front sway bar (except Spirit Sedan)
- ▶ lighted ashtray
- ▶ bucket seats in Sport Vinyl (Spirit)
- ▶ notched bench seat in Sport Vinyl (Concord Base models; Spirit Sedan—no cost option)
- ▶ bench seat in Sport Vinyl or Striped Knit fabric (Concord Base model with automatic transmission)
- ▶ individual reclining seats in Caberfae Corduroy or Sport Vinyl (Pacer)
- ▶ folding rear seat back (Spirit, Concord Wagon and Hatchback, Pacer)
- ▶ custom steering wheel
- ▶ 12 oz. color-keyed carpeting and color-keyed seat belts
- ▶ spare tire cover (Spirit)
- ▶ full wheel covers
- ▶ chrome-plated aluminum bumpers with black end caps (except Pacer)
- ▶ rear bumper guards
- ▶ front bumper guards (Pacer only)
- ▶ dual bodyside pinstripes (except Pacer)
- ▶ quad rectangular headlamps (except Pacer)
- ▶ hood ornament and windsplit molding (Concord and Pacer)
- ▶ drip rail, (except Pacer), wheel lip, hood front edge, windshield surround moldings.

## In addition to or in place of base model standard equipment, Spirit, Concord and Pacer DL models include:

- day/night mirror
- electronic quartz digital clock (Spirit and Concord)
- electric clock (Pacer)
- Extra Quiet insulation
- dual horns
- courtesy lights
- engine compartment light (Concord)
- custom bucket seats in Caberfae Corduroy fabric or Sport Vinyl (Spirit)
- individual reclining seats in Velveteen Crush fabric or Sport Vinyl (Concord)
- individual reclining seats in Caberfae Corduroy fabric or Sport Vinyl or bucket seats in Caberfae Corduroy fabric (Pacer)
- folding split rear seat back (Spirit)
- custom door trim panels
- Walnut Burl woodgrain instrument panel overlay
- custom steering wheel with woodgrain overlays (Concord and Pacer)
- luxury woodgrain steering wheel (Spirit)
- custom headliner and sunvisors
- instrument panel package shelf (Spirit and Concord)
- color-keyed full wheel covers (Concord and Pacer)
- color-keyed styled wheel covers (Spirit)
- cargo area skid strips (Pacer Wagon, Concord Wagon and Hatchback)
- white side wall tires (Spirit and Concord)
- fiberglass belted radial white side wall tires (Pacer)
- bumper guards (front and rear)
- Landau vinyl roof (Concord Sedans and Concord Hatchback)
- woodgrain bodyside overlays (Concord Wagon)
- color-keyed wide bodyside scuff moldings (Concord and Pacer)

## In addition to or in place of DL Model Equipment, Spirit, Concord and Pacer Limited models include:

- AM radio
- power door locks
- power windows (Pacer)
- power liftback release (Spirit Liftback)
- dual remote mirrors
- adjustable tilt steering wheel
- light group
- visibility group
- convenience group
- protection group
- color-keyed styled wheel covers (Concord and Pacer)
- Fiberglass belted radial white side wall tires (Spirit and Concord)
- luxury woodgrain steering wheel (Concord and Pacer)
- bucket seats in genuine leather (Spirit)
- individual reclining seats in genuine leather with beige corduroy accents (Concord, Pacer)
- full length console with center armrest (Spirit)
- folding center armrest (Pacer)
- 18 oz. color-keyed carpeting

## AMX includes these standard features:

258 CID 6-cylinder engine • 4-speed manual floor shift\* • Rally-Tuned suspension system • heavy duty front disc brakes, heavy duty rear drum brakes • unique steering gears • Performance Tuned exhaust sound (V-8 with manual transmission only) • gauze package (full instrumentation with tachometer) • intermittent wipers • inside hood release • power liftback release • 21 gallon fuel tank • Extra Quiet insulation • dual horns • courtesy lights • custom bucket seats in Caberfae Corduroy or Sport Vinyl • folding split rear seat back • custom door trim panels with brushed aluminum accents • full length console with integral center armrest • brushed aluminum instrument panel overlays • color-keyed leather wrapped sport steering wheel • custom headliner and sun visors • color-keyed seat belts (front) • 12 oz. color-keyed carpeting • spare tire cover • instrument panel package shelf • black bumpers with bumper guards and nerfing strips (front and rear) • color-keyed front air dam and rear deck spoiler with accent stripes • color-keyed front and rear fender flares with accent stripes • unique black grille insert and black headlight bezels • Tubocast II aluminum wheels (4) with black accents • ER60 x 14 Flexten belted radial OWL tires • dual black remote mirrors • "AMX" graphics and "AMX" flame decal on hood

\*except California — See engine/trans/axle specifications

Certain equipment items and features illustrated or described in this catalog, are optional at extra cost unless otherwise specified. Certain equipment items and features may not be available for all models. This brochure contains information correct at the time of printing. American Motors, whose policy is one of continuous improvement, reserves the right to discontinue or change specifications, models, equipment or price at any time without incurring obligation. AMC, CONCORD, PACER, SPIRIT, AMX, BUYER PROTECTION PLAN are trademarks of American Motors Corporation.

# SPECIFICATIONS

## ENGINE/TRANSMISSION/AXLE SPECIFICATIONS



Engine	Compr. Ratio	Bore and Stroke	Transmission	Axle Ratio 49 States/California (High Altitude Option)					
				Spirit		AMX	Concord		Pacer
				Liftback	Sedan		Sedans and Hatchback	Wagon	Wagon and Hatchback
121 CID Four	8.1:1	3.41"X3.52"	4-speed manual floor shift automatic column shift automatic floor shift	3.08 (3.31) 3.31/3.31 3.31/3.31	3.08 (3.31) 3.31/3.31 3.31/3.31		3.31 (3.31) 3.58/3.58		
232 CID Six	8.0:1	3.75"X3.50"	3-speed manual floor shift 4-speed manual floor shift automatic column shift automatic floor shift	2.73 2.53 2.53 2.53	2.73 2.53 2.53 2.53		2.53 2.53	2.53 2.73	
258 CID Six	8.0:1	3.75"X3.90"	4-speed manual floor shift automatic column shift automatic floor shift	2.53 (2.53) 2.53/3.08 (2.73) 2.53/3.08 (2.73)	2.53 (2.53) 2.53/3.08 (2.73) 2.53/3.08 (2.73)	2.53 (2.53) 2.53/3.08 (2.73) 2.53/3.08 (2.73)	2.53 (2.53) 2.53/3.08 (2.73) 2.53/3.08 (2.73)	2.53 (2.53) 2.53/3.08 (2.73) 2.53/3.08 (2.73)	2.53 (2.53) 2.53/3.08 (2.73) 2.53/3.08 (2.73)
304 CID V-8	8.4:1	3.75"X3.44"	4-speed manual floor shift automatic column shift automatic floor shift	2.87 2.56' (2.87)		2.87 2.56' (2.87)	2.56' (2.87)	2.56' (2.87)	2.56' (2.87)

<sup>1</sup>2.87 with Twin Grip Note: Powertrain combinations which do not have an axle ratio listed in parentheses are not recommended for vehicles principally operated at high altitudes. If no axle ratio is listed for the state of California, it indicates unavailability.

DIMENSIONS	Spirit		AMX	Concord				Pacer	
	Liftback	Sedan		2-dr. Sedan	4-dr. Sedan	Wagon	Hatchback	Wagon	Hatchback
<b>Exterior Dimensions (inches)</b>									
Wheelbase	96.0	96.0	96.0	108.0	108.0	108.0	108.0	100.0	100.0
Overall Length	168.5	166.8	168.5	186.0	186.0	186.0	186.0	177.7	172.7
Overall Width	71.1	71.1	71.1	71.0	71.0	71.0	71.0	77.0	77.0
Overall Height	51.6	51.7	51.6	51.6	51.1	51.3	51.6	53.1	52.8
Track — front	58.1	58.1	58.1	57.6	57.6	57.7	57.6	61.2	61.2
— rear	57.5	57.5	57.5	57.5	57.5	57.1	57.5	60.0	60.0
<b>Interior Dimensions (inches)</b>									
Head Room — front	37.8	38.1	37.8	38.1	38.1	38.1	38.1	38.5	38.4
— rear	33.5	36.4	33.5	37.5	37.5	37.9	36.7	38.0	36.9
Leg Room — front	40.8	40.8	40.8	40.8	40.8	40.8	40.8	40.7	40.7
— rear	27.7	27.8	27.7	35.7	36.1	36.1	31.1	35.0	35.0
Shoulder Room — front	53.9	53.9	53.9	54.0	54.0	54.0	54.0	58.7	58.7
— rear	53.1	53.0	53.1	53.2	53.4	53.4	52.4	53.3	53.3
Hip Room — front	54.3	54.3	54.3	54.3	54.4	54.4	54.3	56.0	56.0
— rear	40.3	42.2	40.3	52.5	53.6	53.6	51.7	42.3	42.2
Cargo Volume (cubic feet) <sup>1</sup>	24.8	28.6	24.8			57 <sup>3</sup>	32.0	52.5	32.2
Luggage Capacity (cubic feet)				10.8	10.8				
Fuel Capacity (gallons)	21	13 <sup>2</sup>	21	22	22	22	22	21	21
Curb Weight (lbs.)	2631	2517	2970	2946	3015	3044	2974	3250	3204

<sup>1</sup>with rear seat folded down <sup>2</sup>21 gallons with 6 cylinder engines <sup>3</sup>59.2 with hidden compartment

## COLOR SELECTOR

							
Olympic White *	Quick Silver, met. **	Classic Black *	Cumberland Green, met. **	Wedgewood Blue *	Starboard Blue, met. **	Khaki	British Bronze, met. **
							
Saxon Yellow *	Morocco Buff *	Alpaca Brown, met. **	Sable Brown, met. **	Firecracker Red *	Russet, met. **	Bordeaux, met. **	Misty Beige Clearcoat *

Availability (on most models): \* all carlines \*\* all carlines except AMX \*\*\* Pacer only

---

# 1979 BUYER PROTECTION PLAN®

## GUARANTEE COVERAGE

This guarantee gives you 12-month or 12,000-mile (20,000 km) coverage on many items not covered by most car warranties. It covers wiper blades, brake linings, light bulbs—everything we put on the car except tires. If any part American Motors supplies is wrong on your 1979, you won't have to pay for the parts or the labor. You are responsible to see that your car is maintained, at your expense, according to the 1979 Owner's Manual and Maintenance Schedule booklet.

## SERVICE ADJUSTMENTS

Any needed service adjustments required during the first 12 months or 12,000 miles (20,000 km) of normal use, whichever comes first, and which are not required as part of normal scheduled maintenance will be performed by an authorized AMC dealer without charge to the owner.

## GUARANTEE SERVICE FOR OWNERS WHO MOVE OR TRAVEL.

If you move or are traveling, any AMC dealer in the 50 United States or Canada will perform guarantee repairs for you.

## GUARANTEE COVERAGE FOR SUBSEQUENT OWNERS.

Subsequent owners of an AMC car are eligible for any unused guarantee coverage. A subsequent owner need simply present the owner's manual (properly filled-out) to an authorized AMC dealer to obtain guarantee repairs.

## TIRE POLICY

The tire manufacturer provides a limited warranty for the tires supplied with your new car. Specific warranty information and tire adjustments are handled directly with owners by the tire manufacturer's distributors, dealers or retail stores. Your AMC dealer will assist if you need help in securing an adjustment.

## NEW CAR PRE-DELIVERY SERVICE

Your AMC dealer has serviced and tested your new car for starting, handling, braking and overall performance in accordance with AMC's Dealer Pre-Delivery Service Procedure. In addition, many other checks, inspections, adjustments and final clean-up services have been performed to assure your car meets the quality standards of AMC products.

## A LOANER CAR

If your car needs guarantee repair work and "same day" (morning to evening) service cannot be completed as promised or if guarantee repairs require that the car be kept overnight, your AMC dealer will provide you with a free loaner car until your car is ready. To qualify, you must comply with your dealer's work schedule.

## SPECIAL TRIP INTERRUPTION PROTECTION

If you're 100 miles (160 km) or more from home and a servicing AMC dealer can't provide "same day" guarantee repairs for your car, interrupting your trip, we will reimburse you for reasonable extra lodging and meal costs up to \$150, based upon your actual expenses. Submit receipts to the AMC dealer who serviced your car. He'll handle the paperwork that generates a direct reimbursement from American Motors to you.

---

## 1979 AMC FULL 12-MONTH/12,000\*-MILE NEW CAR WARRANTY

When you buy a new 1979 AMC car from an AMC dealer, American Motors Corporation\*\* guarantees to you that for 12 months or 12,000\* miles from the date of delivery or first use, whichever comes first, it will, except for tires, pay for the repair or replacement of any part it supplies which proves defective in material or workmanship.

All we require is that the car be properly maintained and cared for under normal use and service in the fifty United States or Canada and that guarantee repairs or replacements be made by an AMC dealer.

*No other express warranty is given or authorized by American Motors. American Motors shall not be liable for loss of use of vehicle, loss of time, inconvenience or other incidental or consequential damages. Some states and provinces do not allow limitation or exclusion of incidental or consequential damages so the above exclusion and limitation may not apply to you. This warranty gives you specific legal rights, and you may also have other rights which vary from state to state or province to province.*

\*In Canada (20,000 km)

\*\*In Canada: American Motors (Canada) Limited